

# Certificate of Analysis

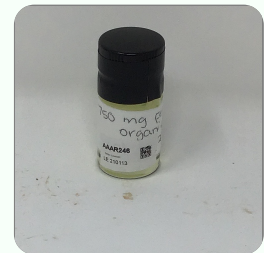
Order #: GRE201016-060024      Order Date: 2020-10-16      Collection Date: 2020-10-21      Report Date: 2020-11-02

Batch #: LE 210113  
 Sample #: AAAR246  
 Specimen Type: CBD/HEMP Edibles (Ingestion)  
 Extracted From: HEMP  
 Description: 750 mg Organic Peppermint Full Spectrum MCT Oil Tincture

Initial Gross Weight: 37.753 g  
 Specimen Weight: 246.52 mg  
 Method: SOP-3



Potency <b>Tested</b>	Heavy Metals <b>Passed</b>	Mycotoxins <b>Passed</b>
Pesticides <b>Passed</b>	Residual Solvents <b>Passed</b>	Microbiology Petrifilm <b>Tested</b>



The photos on this report are of a sample collected by the lab and may vary from the final packaging.

<b>Total CBD</b> 2.824%	<b>Total THC</b> 0.172%	<b>Total CBG</b> 0.037%
<b>Total CBN</b> Not Detected	<b>Other Cannabinoids</b> 0.047%	<b>Total Cannabinoids</b> 3.079%

**Potency - 11 (Tested)**

(HPLC/LCMS)

Analyte	Result (mg/g)	(%)	LOQ (%)	Analyte	Result (mg/g)	(%)	LOQ (%)	Analyte	Result (mg/g)	(%)	LOQ (%)
CBC	0.223	0.022	0.001	CBD	28.240	2.824	0.001	CBDA	<LOQ		0.001
CBDV	0.244	0.024	0.001	CBG	0.366	0.037	0.001	CBGA	<LOQ		0.001
CBN	<LOQ		0.001	Delta-8 THC	<LOQ		0.001	Delta-9 THC	1.720	0.172	0.001
THCA-A	<LOQ		0.001	THCV	<LOQ		0.001	<b>Total CBD</b>	28.240	2.824	0.001
<b>Total THC</b>	1.720	0.172	0.001								

\*Total CBD = CBD + (CBD-A \* 0.877), \*Total THC = THCA-A \* 0.877 + Delta 9 THC, \*CBG Total = (CBGA \* 0.877) + CBG, \*CBN Total = (CBNA \* 0.877) + CBN, \*Other Cannabinoids Total = CBC + CBDV + THCV + THCV-A, \*Total Detected Cannabinoids = CBD Total + CBG Total + CBN Total + THC Total + CBC + CBDV + THCV + THCV-A (mg/g) = Milligram per Gram, , LOQ = Limit of Quantitation, , LOD = Limit of Detection, \*Measurement of Uncertainty = +/- 5%

Xueli Gao      Lab Toxicologist  
 Ph.D., DABT

Aixia Sun      Lab Director/Principal Scientist  
 D.H.Sc., M.Sc., B.Sc., MT (AAB)

This report shall not be reproduced, without written approval, from ACS Laboratory. The results of this report relate only to the material or product analyzed. Test results are confidential unless explicitly waived otherwise. Accredited by a third-party accrediting body as a competent testing laboratory pursuant to ISO/IEC 17025 of the International Organization for Standardization.

721 Cortaro Drive  
 Sun City Center, FL - 33573

P: +1 (866) 762-8379  
 F: +1 (813) 634-4538

E: info@acslabcannabis.com  
 http://www.acslabcannabis.com

License No. 800025015  
 CLIA No. 10D1094068

**Order #:** GRE201016-060024      **Order Date:** 2020-10-16      **Collection Date:** 2020-10-21      **Report Date:** 2020-11-02

**Batch #:** LE 210113  
**Sample #:** AAAR246  
**Specimen Type:** CBD/HEMP Edibles (Ingestion)  
**Extracted From:** HEMP  
**Description:** 750 mg Organic Peppermint Full Spectrum MCT Oil Tincture

**Initial Gross Weight:** 37.753 g  
**Specimen Weight:** 246.52 mg  
**Method:** SOP-3



### Heavy Metals (Passed)

(ICP-MS)

Analyte	Action Level (ppb)	Result (ppb)	LOQ (ppb)	Analyte	Action Level (ppb)	Result (ppb)	LOQ (ppb)	Analyte	Action Level (ppb)	Result (ppb)	LOQ (ppb)
Arsenic (As)	1500	<LOQ	100	Cadmium (Cd)	500	<LOQ	100	Lead (Pb)	500	<LOQ	100
Mercury (Hg)	3000	<LOQ	100								

(ppb) = Parts per Billion, (ppb) = (µg/kg), , LOQ = Limit of Quantitation

### Mycotoxins (Passed)

(LCMS/API/GCMS)

Analyte	Action Level (ppb)	Result (ppb)	LOQ (ppb)	Analyte	Action Level (ppb)	Result (ppb)	LOQ (ppb)	Analyte	Action Level (ppb)	Result (ppb)	LOQ (ppb)
Aflatoxin B1	20	<LOQ	6	Aflatoxin B2	20	<LOQ	6	Aflatoxin G1	20	<LOQ	6
Aflatoxin G2	20	<LOQ	6	Ochratoxin A	20	<LOQ	12				

(ppb) = Parts per Billion, (ppb) = (µg/kg), , LOQ = Limit of Quantitation

Xueli Gao      Lab Toxicologist  
 Ph.D., DABT

Aixia Sun      Lab Director/Principal Scientist  
 D.H.Sc., M.Sc., B.Sc., MT (AAB)

*This report shall not be reproduced, without written approval, from ACS Laboratory. The results of this report relate only to the material or product analyzed. Test results are confidential unless explicitly waived otherwise. Accredited by a third-party accrediting body as a competent testing laboratory pursuant to ISO/IEC 17025 of the International Organization for Standardization.*

721 Cortaro Drive  
 Sun City Center, FL - 33573

P: +1 (866) 762-8379  
 F: +1 (813) 634-4538

E: [info@acslabcannabis.com](mailto:info@acslabcannabis.com)  
<http://www.acslabcannabis.com>

License No. 800025015  
 CLIA No. 10D1094068

Order #: GRE201016-060024      Order Date: 2020-10-16      Collection Date: 2020-10-21      Report Date: 2020-11-02

Batch #: LE 210113  
 Sample #: AAAR246  
 Specimen Type: CBD/HEMP Edibles (Ingestion)  
 Extracted From: HEMP  
 Description: 750 mg Organic Peppermint Full Spectrum MCT Oil Tincture

Initial Gross Weight: 37.753 g  
 Specimen Weight: 246.52 mg  
 Method: SOP-3



## Pesticides FL V4 (Non-Inhalable) (Passed)

(LCMS/API/GCMS)

Analyte	Action Level (ppb)	Result (ppb)	LOQ (ppb)	Analyte	Action Level (ppb)	Result (ppb)	LOQ (ppb)	Analyte	Action Level (ppb)	Result (ppb)	LOQ (ppb)
Abamectin	300	<LOQ	28.23	Acephate	3000	<LOQ	30	Acequinocyl	2000	<LOQ	48
Acetamiprid	3000	<LOQ	30	Aldicarb	100	<LOQ	30	Azoxystrobin	3000	<LOQ	10
Bifentazate	3000	<LOQ	30	Bifenthrin	500	<LOQ	30	Boscalid	3000	<LOQ	10
Captan	3000	<LOQ	30	Carbaryl	500	<LOQ	10	Carbaryl	500	<LOQ	10
Carbofuran	100	<LOQ	10	Chlorantraniliprole	3000	<LOQ	10	Chlordane	100	<LOQ	10
Chlorfenapyr	100	<LOQ	30	Chlormequat Chloride	3000	<LOQ	10	Chlorpyrifos	100	<LOQ	30
Coumaphos	100	<LOQ	48	Cyfluthrin	1000	<LOQ	30	Clofentezine	500	<LOQ	30
Daminozide	100	<LOQ	30	Diazinon	200	<LOQ	30	Cypermethrin	1000	<LOQ	30
Dimethoate	100	<LOQ	30	Dimethomorph	3000	<LOQ	48	Dichlorvos	100	<LOQ	30
Etofenprox	100	<LOQ	30	Etoazole	1500	<LOQ	30	Ethoprophos	100	<LOQ	30
Fenoxycarb	100	<LOQ	30	Fenpyroximate	2000	<LOQ	30	Fenhexamid	3000	<LOQ	10
Fonicamid	2000	<LOQ	30	Fludioxonil	3000	<LOQ	48	Fipronil	100	<LOQ	30
Imazalil	100	<LOQ	30	Imidacloprid	3000	<LOQ	30	Hexythiazox	2000	<LOQ	30
Malathion	2000	<LOQ	30	Metaxyl	3000	<LOQ	10	Kresoxim Methyl	1000	<LOQ	30
Methomyl	100	<LOQ	30	methyl-Parathion	100	<LOQ	10	Methiocarb	100	<LOQ	30
Myclobutanil	3000	<LOQ	30	Naled	500	<LOQ	30	Mevinphos	100	<LOQ	10
Paclobutrazol	100	<LOQ	30	Pentachloronitrobenzene	200	<LOQ	10	Oxamyl	500	<LOQ	30
Piperonylbutoxide	3000	<LOQ	30	Prallethrin	400	<LOQ	30	Permethrin	1000	<LOQ	30
Propoxur	100	<LOQ	30	Pyrethrins	1000	<LOQ	30	Phosmet	200	<LOQ	30
Spinetoram	3000	<LOQ	10	Spinosad	3000	<LOQ	30	Propiconazole	1000	<LOQ	30
Spirotetramat	3000	<LOQ	30	Spiroxamine	100	<LOQ	30	Pyridaben	3000	<LOQ	30
Thiacloprid	100	<LOQ	30	Thiamethoxam	1000	<LOQ	30	Spiromesifen	3000	<LOQ	30
								Tebuconazole	1000	<LOQ	30
								Trifloxystrobin	3000	<LOQ	30

(ppb) = Parts per Billion, (ppb) = (µg/kg), . LOQ = Limit of Quantitation

Xueli Gao      Lab Toxicologist  
 Ph.D., DABT

Aixia Sun      Lab Director/Principal Scientist  
 D.H.Sc., M.Sc., B.Sc., MT (AAB)

*This report shall not be reproduced, without written approval, from ACS Laboratory. The results of this report relate only to the material or product analyzed. Test results are confidential unless explicitly waived otherwise. Accredited by a third-party accrediting body as a competent testing laboratory pursuant to ISO/IEC 17025 of the International Organization for Standardization.*

721 Cortaro Drive  
 Sun City Center, FL - 33573

P: +1 (866) 762-8379  
 F: +1 (813) 634-4538

E: [info@acslabcannabis.com](mailto:info@acslabcannabis.com)  
<http://www.acslabcannabis.com>

License No. 800025015  
 CLIA No. 10D1094068

**Order #:** GRE201016-060024      **Order Date:** 2020-10-16      **Collection Date:** 2020-10-21      **Report Date:** 2020-11-02

**Batch #:** LE 210113  
**Sample #:** AAAR246  
**Specimen Type:** CBD/HEMP Edibles (Ingestion)  
**Extracted From:** HEMP  
**Description:** 750 mg Organic Peppermint Full Spectrum MCT Oil Tincture

**Initial Gross Weight:** 37.753 g  
**Specimen Weight:** 246.52 mg  
**Method:** SOP-3



### Residual Solvents (CBD) (Passed)

(GC/GCMS)

Analyte	Action Level (ppm)	Result (ppm)	LOQ (ppm)	Analyte	Action Level (ppm)	Result (ppm)	LOQ (ppm)	Analyte	Action Level (ppm)	Result (ppm)	LOQ (ppm)
1,1-Dichloroethene	8	<LOQ	0.16	1,2-dichloroethane	5	<LOQ	0.04	Acetone	5000	<LOQ	2.08
Benzene	2	<LOQ	0.02	Butanes	2000	<LOQ	2.5	Acetonitrile	410	<LOQ	1.17
Ethanol	5000	<LOQ	2.78	Ethyl Acetate	5000	<LOQ	1.11	Chloroform	60	<LOQ	0.04
Ethylene Oxide	5	<LOQ	0.1	Heptane	5000	<LOQ	1.39	Ethyl Ether	5000	<LOQ	1.39
Isopropyl alcohol	500	<LOQ	1.39	Methanol	3000	<LOQ	0.69	Hexane	290	<LOQ	1.17
Pentane	5000	<LOQ	2.08	Propane	2100	<LOQ	5.83	Methylene chloride	600	<LOQ	2.43
Total Xylenes	2170	<LOQ	2.92	Trichloroethylene	80	<LOQ	0.49	Toluene	890	<LOQ	2.92

(ppm) = Parts per Million, (ppm) = (µg/g), , LOQ = Limit of Quantitation

### Microbiology TYM (Petrifilm/Plating) (Tested)

(Petrifilm)

Analyte	Result (cfu/g)	LOQ (cfu/g)
Yeast/Mold	<100	1000

(cfu/g) = Colony Forming Unit per Gram, , LOQ = Limit of Quantitation

Xueli Gao      Lab Toxicologist  
 Ph.D., DABT

Aixia Sun      Lab Director/Principal Scientist  
 D.H.Sc., M.Sc., B.Sc., MT (AAB)

*This report shall not be reproduced, without written approval, from ACS Laboratory. The results of this report relate only to the material or product analyzed. Test results are confidential unless explicitly waived otherwise. Accredited by a third-party accrediting body as a competent testing laboratory pursuant to ISO/IEC 17025 of the International Organization for Standardization.*

721 Cortaro Drive  
 Sun City Center, FL - 33573

P: +1 (866) 762-8379  
 F: +1 (813) 634-4538

E: [info@acslabcannabis.com](mailto:info@acslabcannabis.com)  
<http://www.acslabcannabis.com>

License No. 800025015  
 CLIA No. 10D1094068